



TACO<sup>®</sup>  
MARINE

# TABLE PEDESTALS

STYLE, WORKMANSHIP & VERSATILITY

Our table pedestals are offered in a variety of sizes in both aluminum and stainless steel for a complete range of boats.



# TRITON 3-STAGE ADJUSTABLE TABLE PEDESTAL SYSTEM

Boaters can entertain with confidence while enjoying the versatility and easy adjustability of our Triton 3-Stage Adjustable Table Pedestal. Its quality construction and smooth operation provides years of trouble-free use.

- ▶ Complete assembly for both deck or thru-floor mounting
- ▶ Three tapered columns offer added strength and height adjustments from 14-1/8" to 28"
- ▶ Gas shock provides smooth operation of column adjustment
- ▶ Stainless steel one-motion clamping mechanism provides secure lock
- ▶ Keyed columns prevent rotation
- ▶ Precision engineering with Delrin bearings for smooth trouble-free operation
- ▶ Smooth, satin-anodized finish on columns



# 2-STAGE ADJUSTABLE TABLE PEDESTAL SYSTEM

The ability to precisely and easily adjust your cruiser's table is important when entertaining guests, having dinner or just boating down the waterway. The Power-Matic gas-assisted cylinders are the driving force behind these specific adjustments in our 2-Stage Adjustable Table Pedestal System. Not only does this system provide the freedom of perfect adjustments, its ability to be easily removed and stowed is perfect for saving space and time.

- ▶ Easily adjustable height range from 12-5/8" to 32-1/2"
- ▶ Gas shock provides smooth operation of column adjustment
- ▶ Stainless steel one-motion clamping mechanism provides secure lock
- ▶ Precision engineering with Delrin bearings for smooth, trouble-free operation
- ▶ Choose from an aluminum surface or flush mount table base



# FIXED HEIGHT TABLE PEDESTAL SYSTEM 2-3/8" DIA

For smaller cruising vessels, the need to maximize space is critical. With our 3-piece 2-3/8" Fixed Height Table Pedestal System, we've created the right look, feel and functional products to fill this need. Our precise engineering and high-end materials provide the quality you need and expect from TACO.

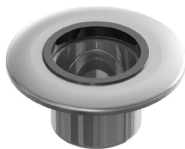
- ▶ Choose from either ribbed or smooth column design in aluminum satin-anodized finish
- ▶ Available base options include a surface mount table pedestal, a flush mount table base or a low-profile flush mount table base
- ▶ All base options are aluminum and brite-anodized finished



# FIXED HEIGHT TABLE PEDESTAL SYSTEM 3" DIA

Our 3-piece 3" Fixed Height Pedestal System provides a wide array of base options to cover most applications. All bases are designed to accept the innovative tapered column for convenient removal and storage. Pedestals can be engineered and manufactured to your exact specifications.

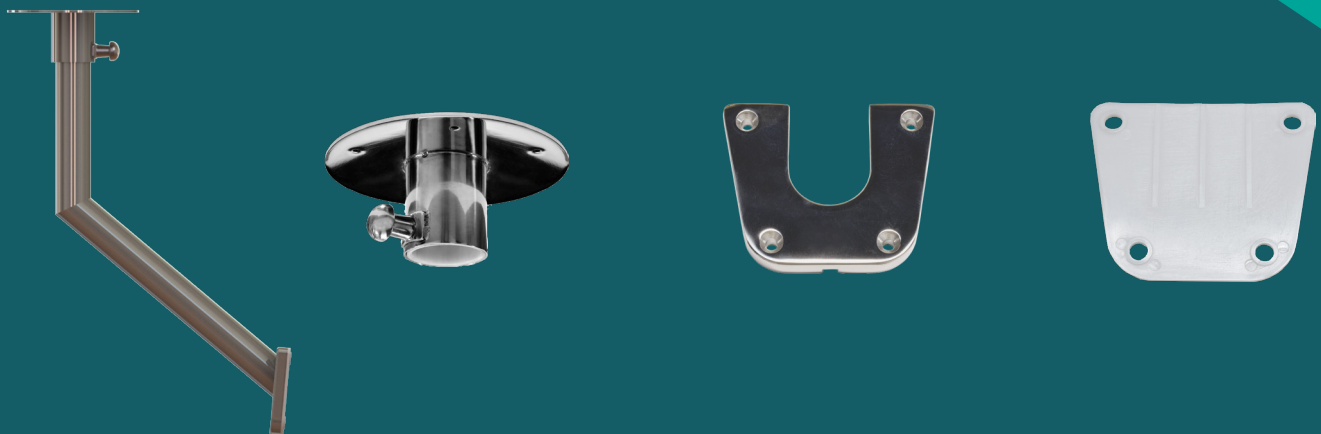
- ▶ Choose from either ribbed or smooth column design in aluminum satin-anodized finish
- ▶ Available base options include a surface mount table pedestal, a flush mount table base or a low-profile flush mount table base
- ▶ All base options are aluminum and brite-anodized finished
- ▶ Also available in a polished stainless steel version with a flush mount table base



**Polished Stainless Steel Flush Mount Table Base  
Z10-4097**

# REMOVABLE SIDE MOUNT TABLE PEDESTAL SYSTEM

With its classy stainless steel appearance, the Removable Side Mount Table Pedestal System is ideal for mounting in various locations throughout the boat.



**TACO**<sup>®</sup>  
MARINE

Explore our complete line of Table Pedestal Systems on our website.

[TACOMARINE.COM](https://www.tacomarine.com)

[f](#) [@](#) [@tacomarine](#) [@](#) [@taco\\_marine](#) <#> [#TACOMARINE](#)